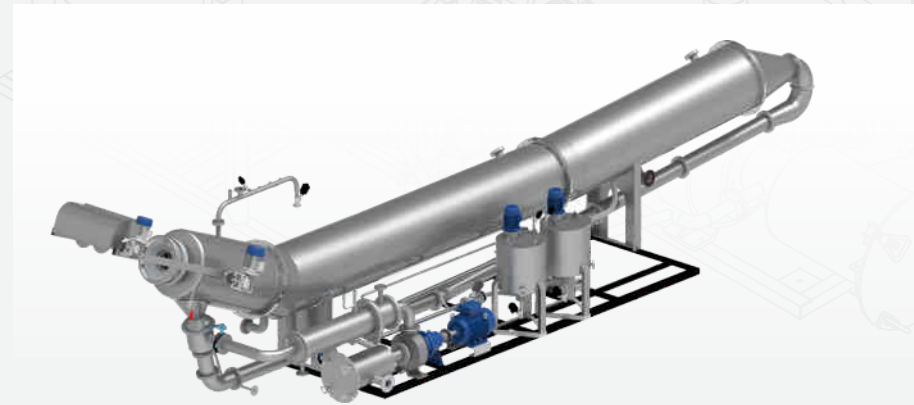
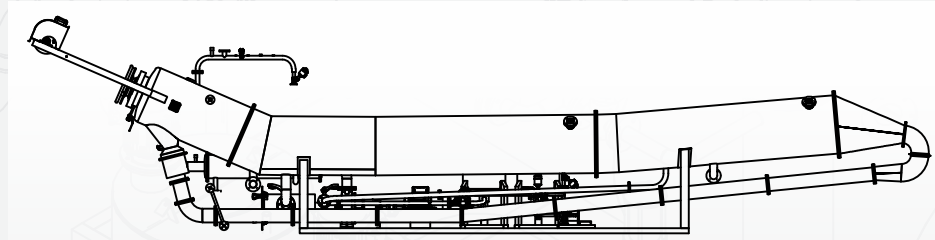
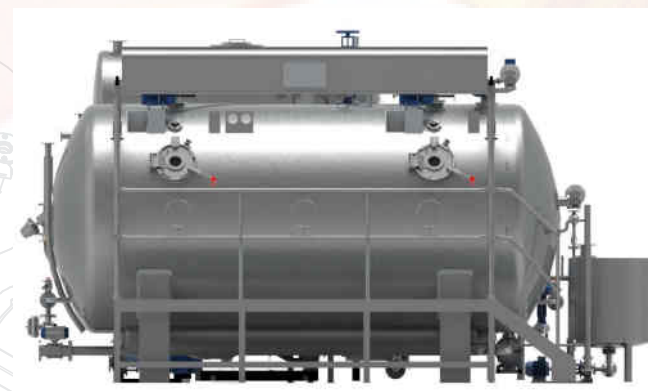


KRSNA LONG TUBE JET DYEING MACHINE



LONG TUBE TYPE 3					
SR. NO.	TUBE	FABRIC CAPACITY (IN KGS.)	ALL DIMENSION ARE IN MM		
			L	W	H
1	1	25	3000	800	2000
2	1	50	4000	800	2000
3	1	100	5500	1000	3500
4	1	150	6500	2200	3500
5	2	300	8500	3500	3500
6	2	400	9500	3500	3500

KRSNA KRANTZ SOFT FLOW DYEING MACHINE



KRSNA Group
CONCEPT TO REALITY

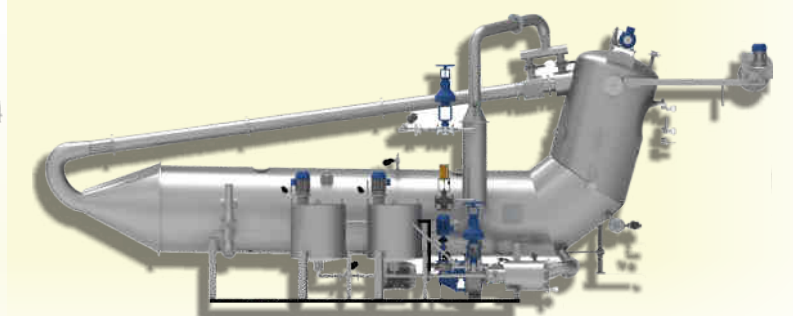
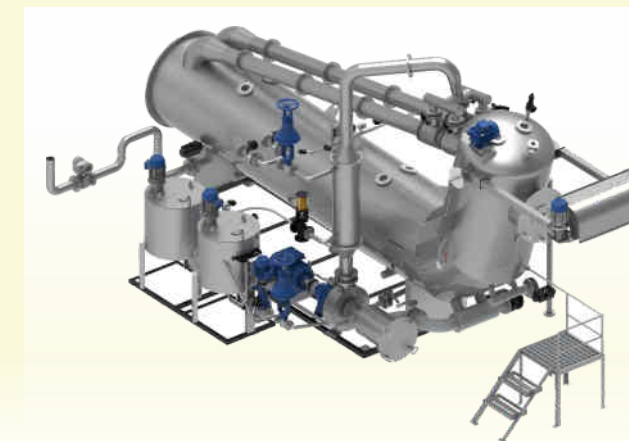
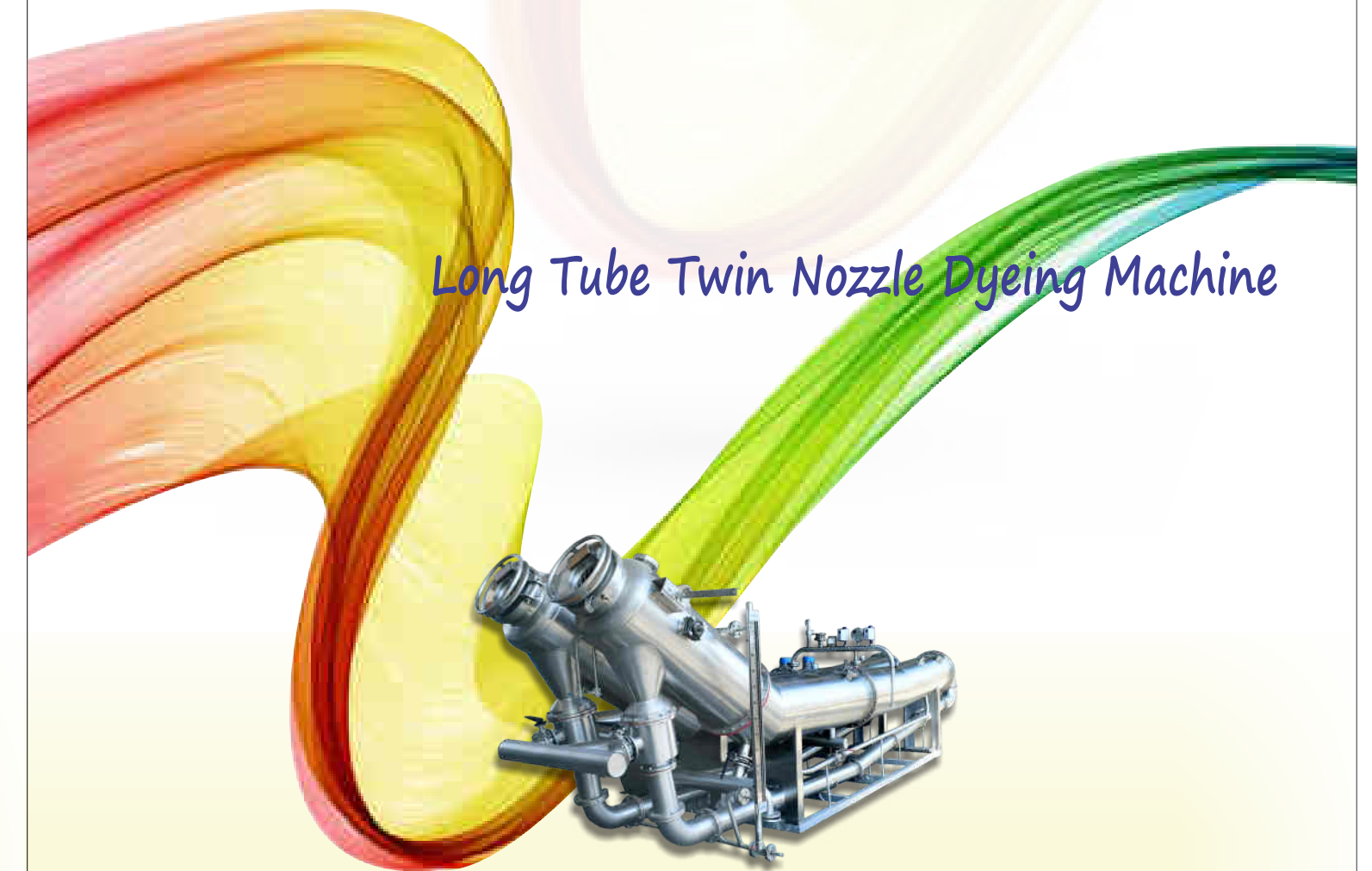
HEAD OFFICE:
45, G.I.D.C. Phase -1, Naroda, Ahmedabad - 382330 (India)
Tel: +91 79 22818537 / 22831613. Fax : + 91 79 22823093
M: +91 98250 96234 / 93777 33484 / 90999 30017
Email : sales@krsnagroup.com, chandreshshah09@gmail.com
Website : krsnagroup.in

*We reserve right to change specifications
Design to change without prior notice*

KRSNA Group
CONCEPT TO REALITY



Long Tube Twin Nozzle Dyeing Machine



KRSNA Long Tube DOUBLE NOZZLE / SOFT FLOW + JET NOZZLE / HIGH TEMPRATURE FABRIC Dyeing is designed for Tension Free Smooth Flow less Dyeing for all kind of **Lower GSM to Higher GSM Fabric** (mostly polyester / Active wear / surface sensitive)

KRSNA HTHP dual flow LONG TUBE dyeing machine is a long term research efforts of KRSNA team. Combination of KRSNA Soft flow & Venturi Jet HTHP Rapid Dyeing Machine. This Special design ensures production of FLOWLESS DYED FABRIC all type of Knitted Active wear as well as woven fabric (**Spandex fabric such as POLY LYCRA / RAYON LYCRA / NYLON LYCRA**)

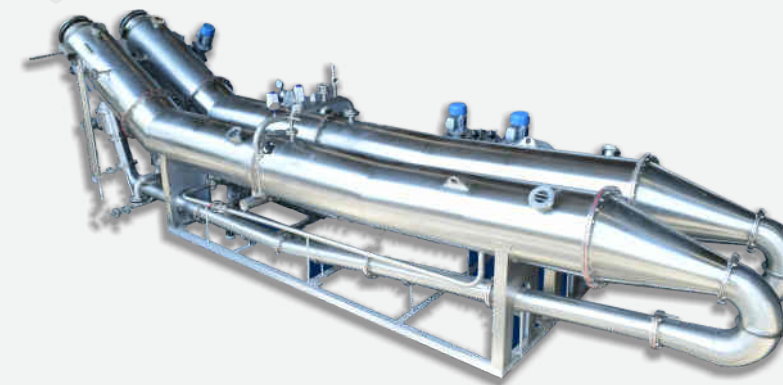
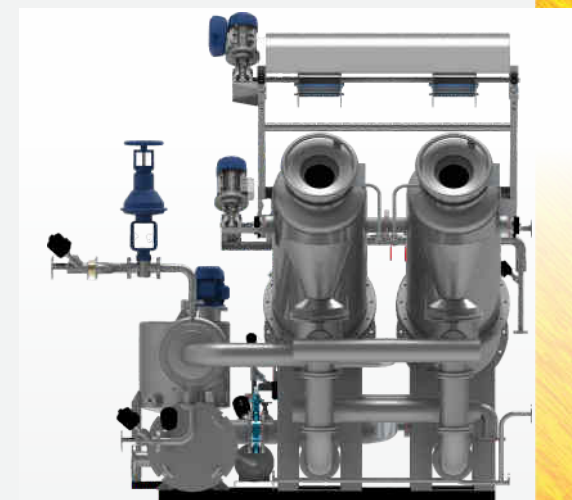
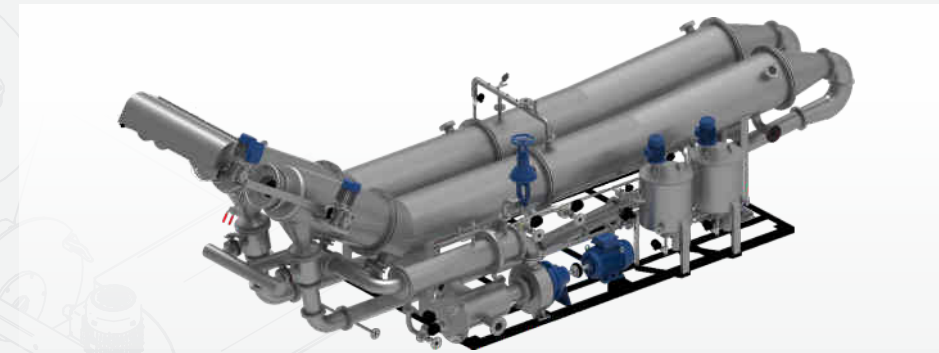
Main Technical Features

- Low Bath ratio, bath ratio can be as low 1:4 ~ 1:8z* Depends on Fabric.
- Flexible water flow so that the high – grade fabric is subjected to the lowest surface impact to ensure no lint, and the STRUCTURE of fabric is not twisted.
- Unique elbow design at REAR END ideal to achieve FLOWLESS dyeing result at minimum tension.
- Adaptable to a wide range of products from general knit fabrics to the latest developments in elastic fabrics.

Main Technical Parameters

- Dual Nozzle (Combination of Overflow & Venturi Jet Nozzle)
- High Temp Soft Flow (Long Tube Top Tube or Long Tube Bottom Tube)
- High Temperature Jet Bottom Tube Dyeing Machine with Single Nozzle.
- Fabric process at Near Zero to 2 kg Nozzle Pressure using only Overflow OR
- Fabric process at 2 Kilo Pressure Using venturi Jet OR
- Fabric process Using Combination of Near Zero Over Flow & Venturi Jet 2 Kilo'
- Design temperature: 5 Kilo / CM Square inch.
- Maximum Working Pressure : 2.5 Kilo / CM Square Inch
- Design temperature: 140° C / Maximum Working temperature 135° C
- Heating rate: 20° C ~ 130° C for about 20/30 minutes (saturated vapor pressure 6 Kilo/CM Square inch.
- Cooling speed: 130° C ~ 80° C for about 20 minutes (Cooling water pressure 5 Kilo / Square Inch) Cooling water temperature: 5° C ~ 10° C.
- Power Drain & Power Fill
- Dual Color tank / Stock Tank
- Proportionate Valve for Dossing Heating Cooling
- Ph. Controller & Flow meter
- Rapid Heating & Rapid Cooling.
- Dossing (linear Progressive & Degressive)
- SS Electrical panel with Climate Controller.
- Seam Detector

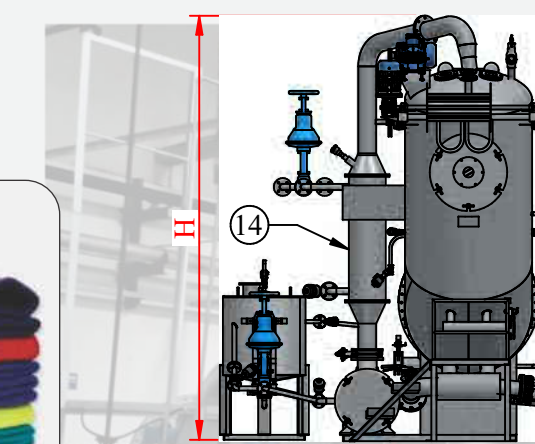
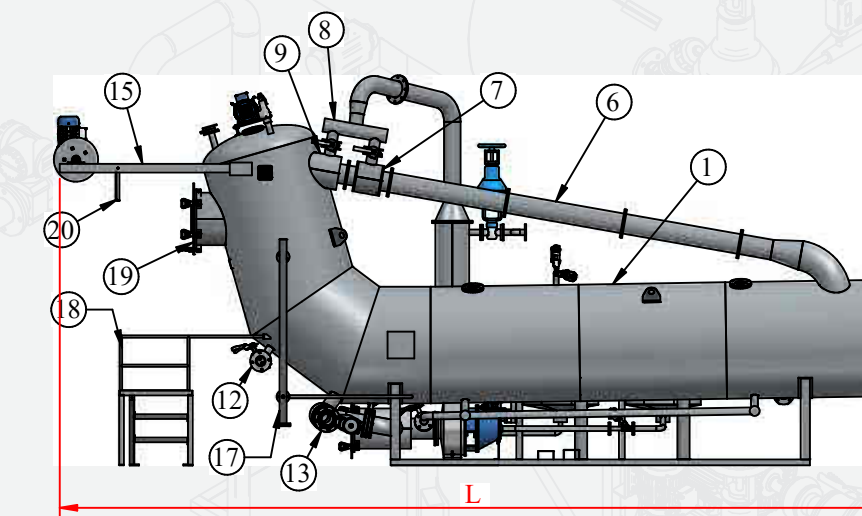
KRSNA LONG TUBE DOUBLE NOZZLE
BOTTOM TUBE SOFT FLOW



LONG TUBE TYPE 3					
SR. NO.	TUBE	FABRIC CAPACITY (IN KGS.)	ALL DIMENSION ARE IN MM		
			L	W	H
1	1	25	3000	800	2000
2	1	50	4000	800	2000
3	1	100	5500	1000	3500
4	1	150	6500	2200	3500
5	2	300	8500	3500	3500
6	2	400	9500	3500	3500



KRSNA LONG TUBE DOUBLE NOZZLE
TOP TUBE SOFT FLOW



LONG TUBE TYPE 1					
SR. NO.	TUBE	FABRIC CAPACITY (IN KGS.)	ALL DIMENSION ARE IN MM		
			L	W	H
1	1	100	6200	3000	3200
2	2	200	7000	3000	3500
3	2	300	7800	3000	3500
4	4	400	8600	5500	3500
5	4	500	9400	5500	3500

